

SNOHOMISH REGION  
HISTORICAL MINIMUM TEMPERATURE: -21.1°C

#### NOTES:

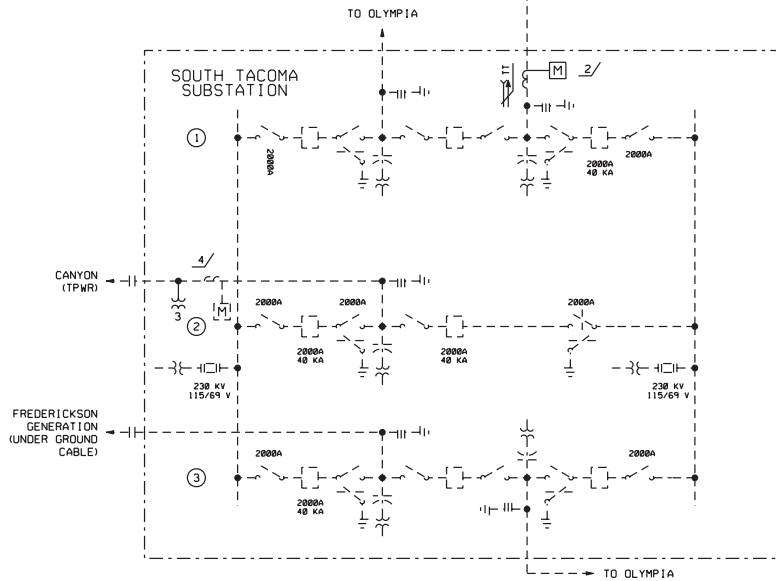
1. THIS PROJECT IS A LINE AND LOADS REQUEST TO RETERMINATE BPA'S SOUTH TACOMA-COWLITZ #1 230 KV LINE FROM TPWR'S 230 KV COWLITZ BUS TO THEIR COWLITZ -SOUTHWEST #4 LINE EFFECTIVELY BY PASSING THEIR COWLITZ SUBSTATION. TACOMA POWER WOULD ALSO LIKE TO RETERMINATE THEIR COWLITZ-TACOMA #2 LINE WITH THEIR COWLITZ-SOUTHWEST #3 LINE CREATING A NEW SOUTHWEST-TACOMA #2 LINE WHICH BYPASSES THEIR COWLITZ SUBSTATION.
2. REMOVE EXISTING SOUTH TACOMA-COWLITZ METERING FROM COWLITZ SUBSTATION. NEW INTERCHANGE METERING AND TRANSFER TRIP WILL BE NECESSARY AT S. TACOMA AND SOUTHWEST SUBSTATIONS. SEE SHEET 2 FOR MORE DETAIL.
3. NEW TRANSFER TRIP WILL BE NEEDED AT TACOMA SUBSTATION AND AT TACOMA POWER'S SOUTHWEST SUBSTATION.
3. COORDINATING ENGINEER:  
DEBORAH HAMMACK-TPP/DITT-2  
PHONE: (360) 418-8338
4. CAD TECHNICIAN:  
ALEX VASILIU-TPM/MODD  
PHONE: (360) 418-2382

#### CURRENT FAULT VALUES (IN KA)

	WITHOUT PROJECT		WITH PROJECT	
	1LG	3LG	1LG	3LG
COWLITZ-TPWR 230 KV	26,065	30,854	24,881	29,711
FREDERICKSON 230 KV	21,053	23,176	20,931	22,928
OLYMPIA (MB1) 230 KV	24,807	26,725	24,810	26,730
OLYMPIA (MB2) 230 KV	24,812	26,732	24,816	26,737
OLYMPIA (MB3) 230 KV	24,807	26,727	24,811	26,732
S. TACOMA-C 230 KV	14,574	20,034	13,488	18,887
SOUTHWEST 230 KV	17,427	24,002	19,770	26,281
WHITE RIVER 230 KV	24,628	31,117	24,628	31,107

#### LEGEND

—	NEW THIS PROJECT
- - - - -	EXISTING EQUIPMENT
× × × × ×	TO BE REMOVED
- · - · - · -	BOUNDARY LINE
—    —	CHANGE OF OWNERSHIP



DRAFT  
JUN-03-2008

NO.	COMPUTER REVISION ONLY	PLANNING ENGINEER	APPROVED
PROJECT REQUIREMENTS DIAGRAM			
UNITED STATES DEPARTMENT OF ENERGY BONNEVILLE POWER ADMINISTRATION HEADQUARTERS, PORTLAND, OREGON			
PROPOSED ENERGIZATION DATE(S) AUG-01-2009		OPERATIONS & PLANNING	
PRELIMINARY APPROVED DATE		RETERMINATE SOUTH TACOMA - COWLITZ 230 KV LINE	
PLANNING ENGINEER D HAMMACK			
FINAL APPROVED	DATE	SERIAL 281860	SOURCE TP
		SIZE A1	SHEET 1 OF 2
			REVISION 0